

Ashtons



York Rlse Heslington Road YO10 5AE

£1,250 PCM

2



1



1



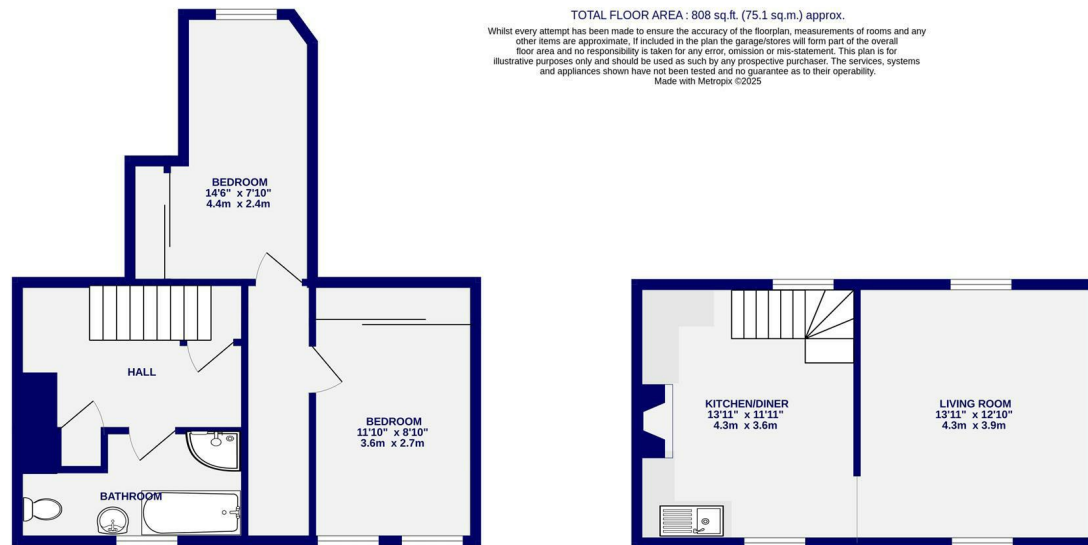
C





Situated just off Heslington Road within walking distance of the City Centre is this unique two bedroom cottage situated in a pretty courtyard development. Offered for let on an unfurnished basis the property comprises entrance hall off which are two double bedrooms both with fitted wardrobes. Off the main hallway is the bathroom with shower, bath, WC and basin. Store cupboard housing the washing machine and freezer. Stairs lead up in to the kitchen which is on the first floor. The dining kitchen has many original features including a cast iron fire place. Appliances include fridge, electric oven/gas hob, dishwasher. Steps lead up in to the lounge. This property would suit a professional person or couple wishing to be close to the city centre. There is no garden and parking is on street on Heslington Road. Available mid March.

Council Tax Band B / EPC Rating C / Deposit £1350 / 12 Month Tenancy



Ashtons

OnTheMarket

rightmove

Zoopla



Ashtons Lettings

01904 731404

lettings@ashtonsnet.com